

1) Status of the notification

Final

2) Issuer

Name

SOLVAY

Identification number

0403-091-220

3) Reason for the notification

Acquisition or disposal of financial instruments that are treated as voting securities

4) Notification by

A parent undertaking or a controlling person

5) Persons subject to the notification requirement

Name	Address (for legal entities)
The Goldman Sachs Group, Inc	Corporation Truse Center, 1209 Orange Street, Wilmington, DE 19801, USA

6) Persons that dispose of voting rights (only to be filled in if art. 7 of the Law applies)

Name	Address (for legal entities)

 Please continue entering the information in **part II** concerning the persons referred to in Sections 5 and 6

Part II

7) Date on which the threshold is crossed

11/02/2026 (DD/MM/YYYY)

8) Threshold that is crossed (in %)

7.5

 If the holding has fallen below the lowest threshold, you have the option of not entering any numbers in Section 10

9) Denominator

105,876,416

 Please enter the denominator before filling in the data

10) Notified details

A) Voting rights	Previous notification	After the transaction			
	# of voting rights	# of voting rights		% of voting rights	
Holders of voting rights		Linked to securities	Not linked to the securities	Linked to securities	Not linked to the securities
The Goldman Sachs Group, Inc.	0	0		0.00%	
Goldman Sachs & Co. LLC	218,518	196,047		0.19%	
Goldman Sachs Asset Management, L.P.	22,614	78,635		0.07%	
Goldman Sachs Asset Management International	341	19,811		0.02%	

Goldman Sachs Bank Europe SE	5,917	0		0.00%	
Subtotal	247,390	294,493		0.28%	
TOTAL		294,493	0	0.28%	0.00%

-


+



Start with "groups" of holders. Add subtotals with Σ , and then finish with the persons who are "alone".
For groups, start with the ultimate controlling natural person or legal entity.
The totals, subtotals and % will be updated once you have clicked on **<CALCULATE>**.

B) Equivalent financial instruments	After the transaction						
Holders of equivalent financial instruments	Type of financial instrument	Expiration date	Exercise period or date	# of voting rights that may be acquired if the instrument is exercised	% of voting rights	Settlement	
Goldman Sachs Bank Europe SE	Call Warrant	30/06/2037		4,550,000	4.30%	cash	-
Goldman Sachs Bank Europe SE	Call Warrant	31/12/2035		11,310	0.01%	cash	-
Goldman Sachs Bank Europe SE	Call Warrant	31/12/2035		10,301	0.01%	cash	-
Goldman Sachs Bank Europe SE	Call Warrant	31/12/2035		10,000	0.01%	cash	-
Goldman Sachs Bank Europe SE	Call Warrant	31/12/2035		6,000	0.01%	cash	-
Goldman Sachs Bank Europe SE	Call Warrant	31/12/2035		6,000	0.01%	cash	-
Goldman Sachs Bank Europe SE	Call Warrant	31/12/2035		5,672	0.01%	cash	-
Goldman Sachs Bank Europe SE	Call Warrant	31/12/2035		4,000	0.00%	cash	-
Goldman Sachs Bank Europe SE	Call Warrant	31/12/2035		3,200	0.00%	cash	-
Goldman Sachs Bank Europe SE	Call Warrant	31/12/2035		2,400	0.00%	cash	-
Goldman Sachs Bank Europe SE	Call Warrant	31/12/2035		1,700	0.00%	cash	-
Goldman Sachs Bank Europe SE	Call Warrant	31/12/2035		1,500	0.00%	cash	-
Goldman Sachs Bank Europe SE	Call Warrant	31/12/2035		928	0.00%	cash	-
Goldman Sachs Bank Europe SE	Call Warrant	31/12/2035		800	0.00%	cash	-
Goldman Sachs Bank Europe SE	Call Warrant	31/12/2035		600	0.00%	cash	-
Goldman Sachs Bank Europe SE	Call Warrant	31/12/2035		400	0.00%	cash	-
Goldman Sachs Bank Europe SE	Call Warrant	31/12/2035		226	0.00%	cash	-
Goldman Sachs Bank Europe SE	Call Warrant	31/12/2035		100	0.00%	cash	-
Goldman Sachs Bank Europe SE	Call Warrant	31/12/2035		90	0.00%	cash	-
Goldman Sachs International	Call Option	19/06/2026		175,000	0.17%	Physical	-
Goldman Sachs International	Put Option	18/06/2027		150,000	0.14%	Physical	-
Goldman Sachs International	Put Option	18/12/2026		75,000	0.07%	Physical	-
Goldman Sachs International	Swap	26/11/2035		579,878	0.55%	cash	-
Goldman Sachs International	Swap	21/01/2036		394,714	0.37%	cash	-
Goldman Sachs International	Swap	28/12/2026		259,592	0.25%	cash	-
Goldman Sachs International	Swap	26/11/2035		249,002	0.24%	cash	-
Goldman Sachs International	Swap	26/02/2027		248,606	0.23%	cash	-
Goldman Sachs Finance Corp International Ltd	Swap	30/04/2035		130,419	0.12%	cash	-
Goldman Sachs International	Swap	16/01/2029		124,285	0.12%	cash	-
Goldman Sachs International	Swap	22/05/2035		114,757	0.11%	cash	-
Goldman Sachs Finance Corp International Ltd	Swap	25/09/2034		109,417	0.10%	cash	-
Goldman Sachs International	Swap	30/10/2035		88,838	0.08%	cash	-
Goldman Sachs Finance Corp International Ltd	Swap	10/04/2035		86,357	0.08%	cash	-
Goldman Sachs Finance Corp International Ltd	Swap	14/04/2037		45,708	0.04%	cash	-
Goldman Sachs International	Swap	14/08/2028		26,563	0.03%	cash	-
Goldman Sachs International	Swap	05/09/2028		22,774	0.02%	cash	-
Goldman Sachs International	Swap	14/01/2036		22,155	0.02%	cash	-
Goldman Sachs International	Swap	11/01/2027		21,578	0.02%	cash	-
Goldman Sachs International	Swap	14/07/2037		17,523	0.02%	cash	-
Goldman Sachs International	Swap	06/06/2035		17,172	0.02%	cash	-
Goldman Sachs Finance Corp International Ltd	Swap	27/09/2034		16,264	0.02%	cash	-
Goldman Sachs International	Swap	06/11/2035		15,045	0.01%	cash	-
Goldman Sachs International	Swap	05/02/2029		13,452	0.01%	cash	-

Goldman Sachs International	Swap	14/07/2037		13,142	0.01%	cash	-
Goldman Sachs Finance Corp International Ltd	Swap	22/09/2031		12,633	0.01%	cash	-
Goldman Sachs International	Swap	11/11/2027		10,886	0.01%	cash	-
Goldman Sachs International	Swap	24/12/2035		10,781	0.01%	cash	-
Goldman Sachs International	Swap	12/11/2035		9,145	0.01%	cash	-
Goldman Sachs International	Swap	14/07/2037		7,009	0.01%	cash	-
Goldman Sachs International	Swap	14/01/2036		7,004	0.01%	cash	-
Goldman Sachs International	Swap	05/02/2029		6,838	0.01%	cash	-
Goldman Sachs International	Swap	05/12/2030		6,786	0.01%	cash	-
Goldman Sachs International	Swap	17/08/2026		6,388	0.01%	cash	-
Goldman Sachs International	Swap	26/11/2035		5,708	0.01%	cash	-
Goldman Sachs International	Swap	13/11/2034		5,647	0.01%	cash	-
Goldman Sachs International	Swap	25/02/2028		4,818	0.00%	cash	-
Goldman Sachs International	Swap	04/09/2028		4,427	0.00%	cash	-
Goldman Sachs International	Swap	14/07/2037		4,381	0.00%	cash	-
Goldman Sachs International	Swap	02/01/2029		4,068	0.00%	cash	-
Goldman Sachs International	Swap	14/07/2037		3,505	0.00%	cash	-
Goldman Sachs International	Swap	14/07/2037		3,505	0.00%	cash	-
Goldman Sachs International	Swap	14/07/2037		3,505	0.00%	cash	-
Goldman Sachs International	Swap	14/07/2037		2,628	0.00%	cash	-
Goldman Sachs International	Swap	14/07/2037		2,628	0.00%	cash	-
Goldman Sachs International	Swap	26/11/2035		1,885	0.00%	cash	-
Goldman Sachs International	Swap	14/07/2037		1,752	0.00%	cash	-
Goldman Sachs International	Swap	17/08/2026		1,595	0.00%	cash	-
Goldman Sachs International	Swap	16/01/2031		910	0.00%	cash	-
Goldman Sachs International	Swap	14/07/2037		876	0.00%	cash	-
Goldman Sachs International	Swap	11/05/2026		472	0.00%	cash	-
Goldman Sachs International	Swap	05/01/2027		446	0.00%	cash	-
Goldman Sachs International	Swap	30/04/2026		427	0.00%	cash	-
Goldman Sachs International	Swap	31/10/2035		423	0.00%	cash	-
Goldman Sachs International	Swap	05/11/2035		34	0.00%	cash	-
Goldman Sachs International	Swap	16/04/2026		1	0.00%	cash	-
Goldman Sachs & Co. LLC	Securities Lending	Open		6,967	0.01%	Physical	+
TOTAL				7,770,541	7.34%		

 The totals will be updated once you have clicked on <CALCULATE>

TOTAL (A & B)	# of voting rights	% of voting rights
CALCULATE	8,065,034	7.62%

11) Full chain of controlled undertakings through which the holding is effectively held, if applicable

Please refer to Annexure - Structured Chart

12) In case of proxy voting for only one GM

Holder		will cease to hold / will hold again		0	voting rights as of	(DD/MM/YYYY)
--------	--	---	--	---	---------------------	------------------

13) Additional information

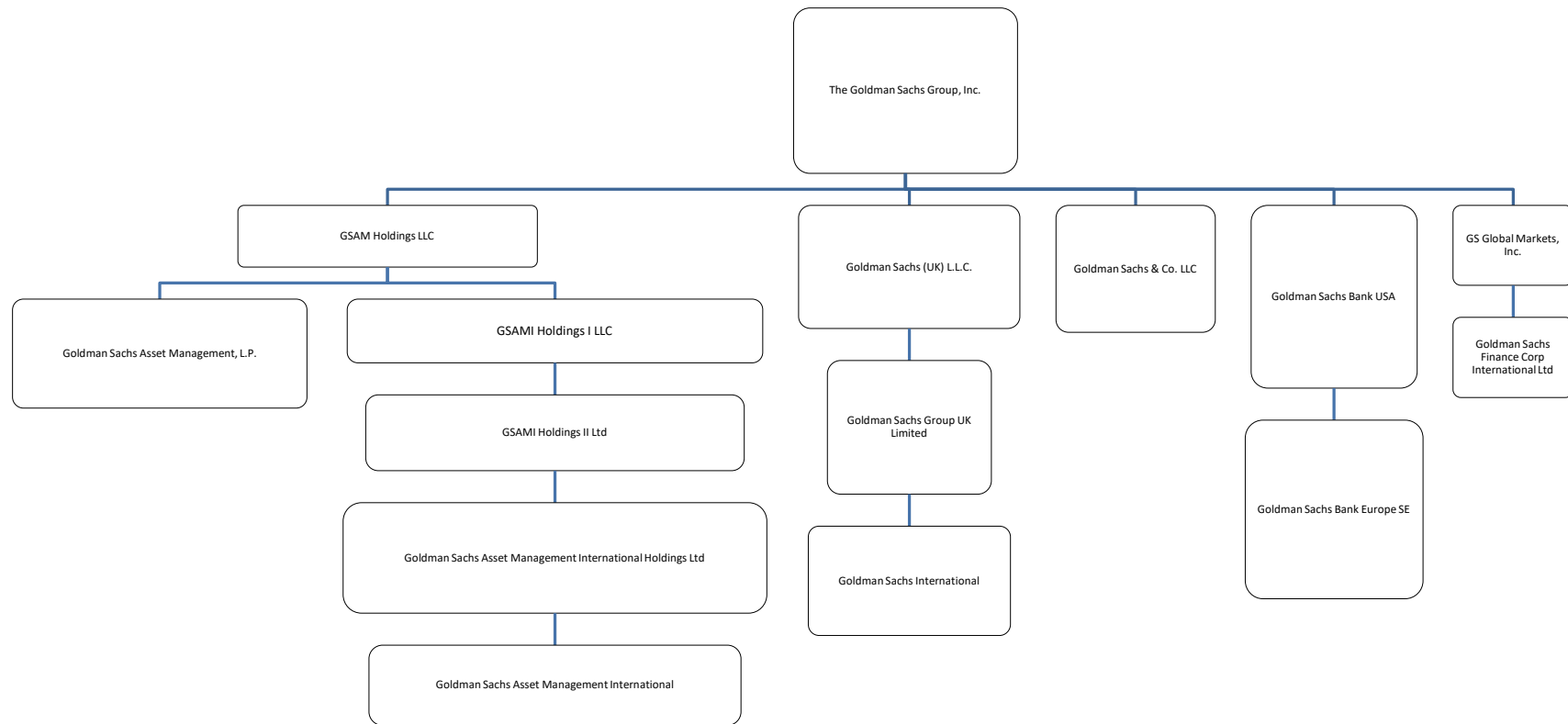
With reference to the items mentioned in Section 10B:
- "Call Warrants", "Swaps", "Call Option" and "Put Option" mentioned in rows 65 to 139- these are held by the corresponding entities where Goldman Sachs has a long exposure

Done at	London
On	16/02/2026 (DD/MM/YYYY)

Name & capacity		Signature			
-----------------	--	-----------	--	--	--

For security reasons, the unsigned form in [xlsx](#) format should be transmitted to trp.fin@fsma.be. You can do this manually OR if you have MS Outlook at your disposal via the “Save & Send” button.

In addition, a signed copy in [PDF](#) format should also be transmitted.



Chain of Controlled Undertakings:

- GOLDMAN SACHS INTERNATIONAL IS CONTROLLED BY GOLDMAN SACHS GROUP UK LIMITED WHICH IS CONTROLLED BY GOLDMAN SACHS (UK) L.L.C. WHICH IS CONTROLLED BY THE GOLDMAN SACHS GROUP, INC.
- GOLDMAN SACHS ASSET MANAGEMENT, L.P. IS CONTROLLED BY GSAM HOLDINGS LLC WHICH IS CONTROLLED BY THE GOLDMAN SACHS GROUP, INC.
- GOLDMAN SACHS ASSET MANAGEMENT INTERNATIONAL IS CONTROLLED BY GOLDMAN SACHS ASSET MANAGEMENT INTERNATIONAL HOLDINGS LTD WHICH IS CONTROLLED BY GSAMI HOLDINGS II LTD. WHICH IS CONTROLLED BY GSAMI HOLDINGS I LLC WHICH IS CONTROLLED BY GSAM HOLDINGS LLC WHICH IS CONTROLLED BY THE GOLDMAN SACHS GROUP, INC.
- GOLDMAN SACHS BANK EUROPE SE IS CONTROLLED BY GOLDMAN SACHS BANK USA WHICH IS CONTROLLED BY THE GOLDMAN SACHS GROUP, INC.
- GOLDMAN SACHS FINANCE CORP INTERNATIONAL LTD WHICH IS CONTROLLED BY GS GLOBAL MARKETS, INC. WHICH IS CONTROLLED BY THE GOLDMAN SACHS GROUP, INC.
- GOLDMAN SACHS & CO. LLC IS CONTROLLED BY THE GOLDMAN SACHS GROUP, INC.